

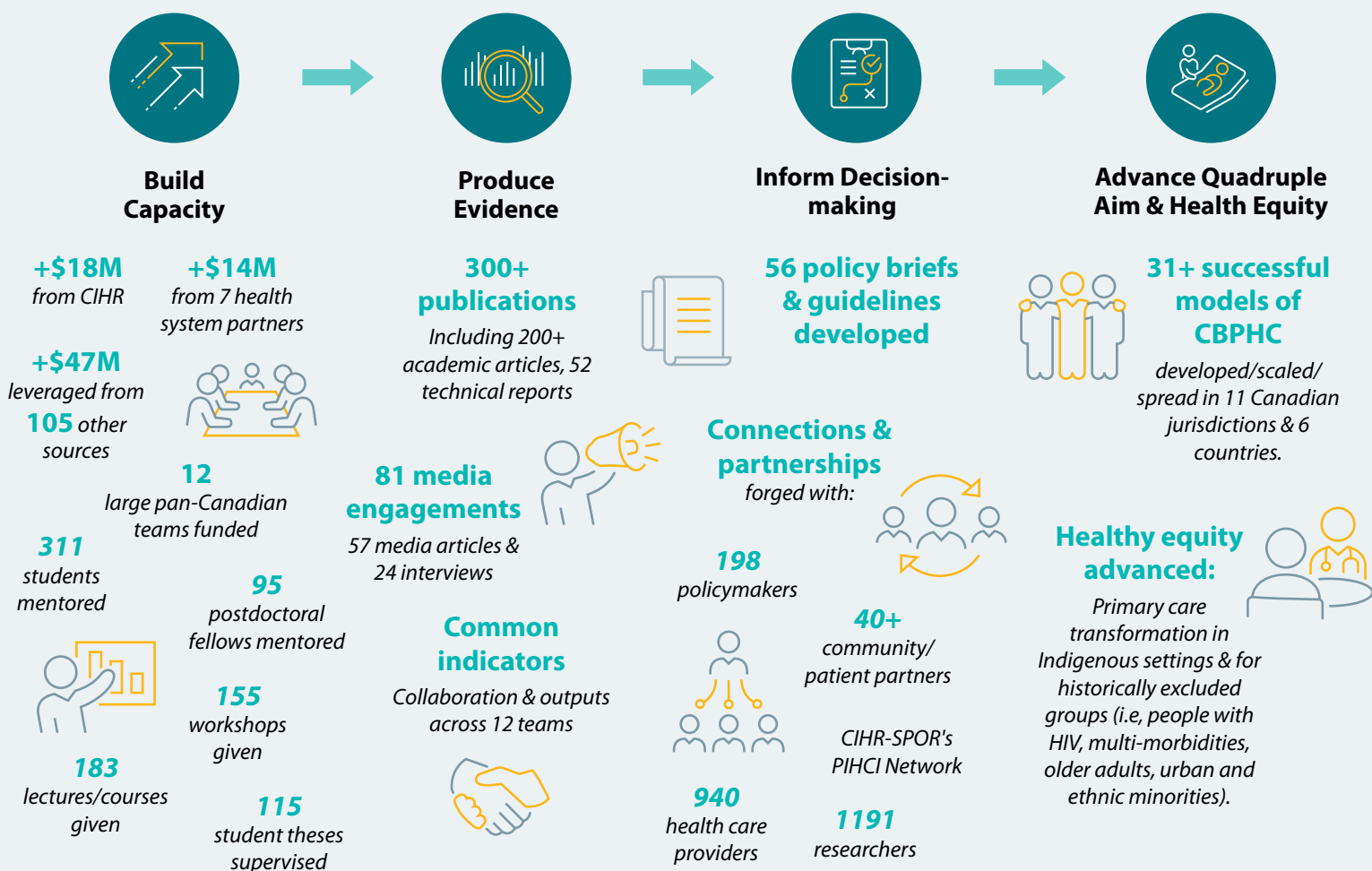
CBPHC INNOVATION TEAMS

The 12 [Community-Based Primary Healthcare \(CBPHC\) Innovation teams](#) were designed to develop and evaluate innovative models of care that improve the prevention and management of chronic diseases and reduce inequities in access to CBPHC and health outcomes in vulnerable populations. The program objectives were to: 1) develop, compare and/or spread innovative models of CBPHC; 2) scale-up successful models; 3) build capacity in CBPHC; 4) evaluate common set of outcome indicators; and 5) improve competitiveness at the national and international levels.

The teams were composed of interdisciplinary, interprofessional and cross-jurisdictional researchers, clinicians, decision makers and patients/citizens. They focused on intersecting CBPHC issues, namely to: address general primary care transformation challenges (5 teams), manage specific conditions within the context of primary care (4 teams), and transform primary care within Indigenous communities (3 teams). The illustration below represents the impacts of the 12 teams for the funding period of 2013-2019 (as reported in their final reports), and grounded in the *Canadian Health Services and Policy Research Alliance (CHSPRA) Impact framework*¹.

IMPACT OF CBPHC INNOVATION TEAMS

Grounded in CHSPRA's impact framework



FOOTNOTE

¹ Canadian Health Services and Policy Research Alliance. [Making an Impact: A Shared Framework for Assessing the Impact of Health Service and Policy Research on Decision-Making](#) 2018.